



**An Roinn Talmhaíochta,
Bia agus Mara**
Department of Agriculture,
Food and the Marine

Import controls process of animal feed

John Higgins VI

Import Control Operations Division
Department of Agriculture, Food and the Marine

February 19, 2021

Introduction



- Operator responsible for the consignment (RFC)
- Common health entry document (CHED- P)
- Submission of documents to Department's Imports Portal (INIS)
- Veterinary controls in border control post

What does operator responsible for consignment do?



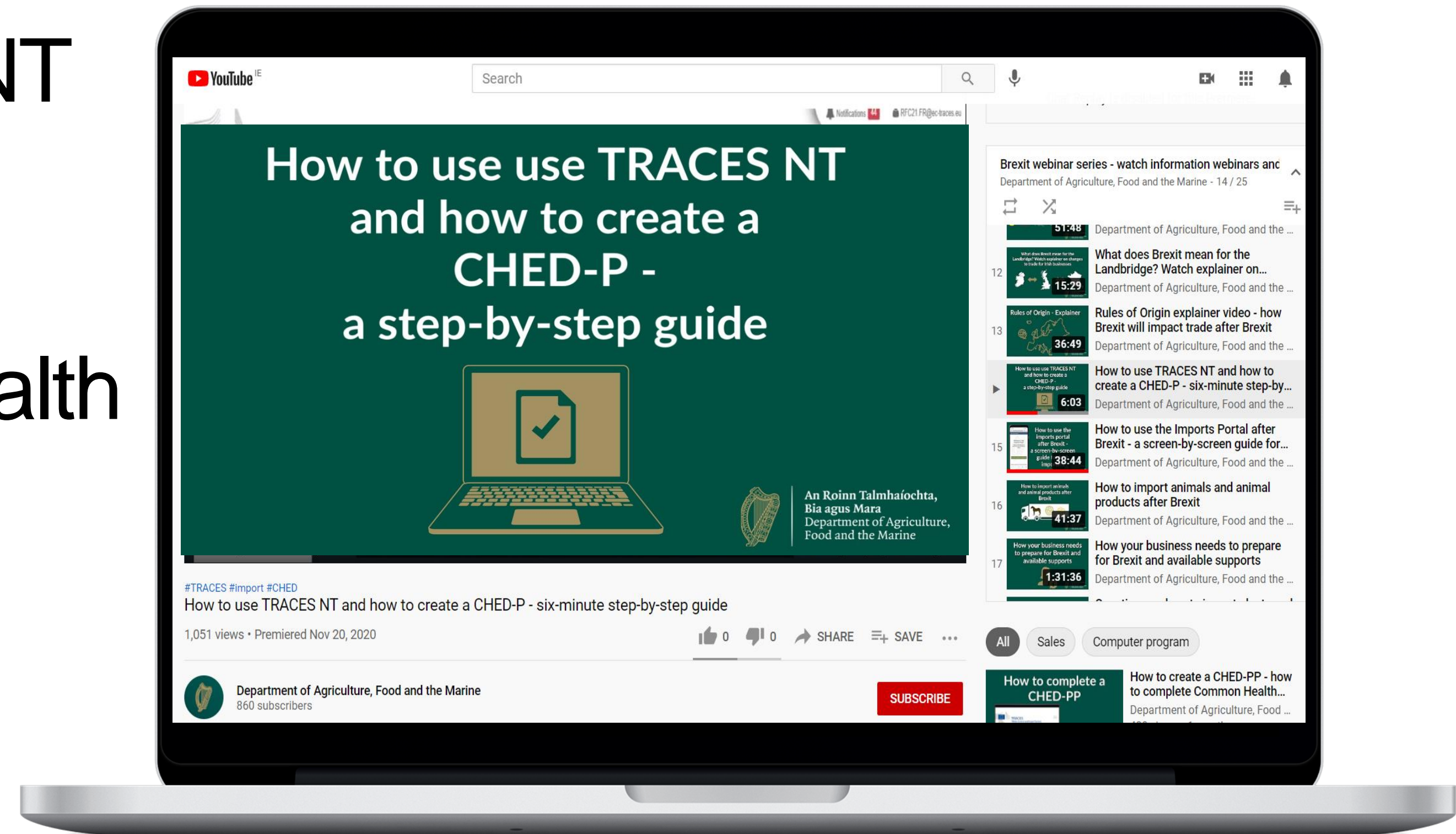
- Either importer or agent acting on behalf of the importer
- Must register with Department to use TRACES NT
- Creates a Common Health Entry Document on TRACES NT
- Submits documents to Department through INIS
- Point of contact at Border Control Post
- Import control fees



What is a Common Health Entry Document?



- Created by RFC on TRACES NT
- 24-hours before arrival in BCP
- Reflects detail on veterinary health certificate
- One health cert per CHED-P





All CHED types

CHED-A

CHED-P

CHED-D

CHED-PP

Unselect all

Please provide nomenclature code, section, species..

Filter



Creating a CHED-P

+ 01 LIVE ANIMALS

- 02 MEAT AND EDIBLE MEAT OFFAL

CHED-P

- 0201 Meat of bovine animals, fresh or chilled

CHED-P

+ 0201 10 Carcasses and half-carcasses

CHED-P

+ 0201 20 Other cuts with bone in

CHED-P

+ 0201 30 Boneless

CHED-P

+ 0202 Meat of bovine animals, frozen

CHED-P

+ 0203 Meat of swine, fresh, chilled or frozen

CHED-P

+ 0204 Meat of sheep or goats, fresh, chilled or frozen

CHED-P

+ 0205 Meat of horses, asses, mules or hinnies, fresh, chilled or frozen

CHED-P

+ 0206 Edible offal of bovine animals, swine, sheep, goats, horses, asses, mules or hinnies, fresh, chilled or frozen

CHED-P

Common Health Entry Document for **Animal Product** with 1 nomenclature(s).

Cancel

Done

I.1. Consignor/Exporter



Name

Edit



Country

ISO Code

Advanced...

Clear

I.2. CHED Reference

No Reference.

I.3. Local reference



Customs Document Reference

Links

QR code

QR CODE

I.6. Consignee/Importer



Name

Edit



Country

ISO Code

Advanced...

Clear

I.4. Border Control Post/Control Point/Control Unit

Name

Assign my BCP

Country

ISO Code

Edit

Advanced...

Clear

Creating a CHED-P

Submission of documents



- Completed by RFC after CHED created
- Scanned colour copy of health certificate and supporting documents, e.g. packing lists, invoices
- Via Department's Imports Portal
 - Currently an anonymous portal

Imports Portal



Please provide valid phone number and email address

Phone number (with country code)

Email Address

Confirm Email Address

Back

Next

Select the type of commodity you will be transporting

Animal Products

All animal products are subject to sanitary (veterinary) checks in accordance with the relevant regulations. Wood packaging or pallets used in the import and transport of products must be ISPM15 compliant.

See more:

- <https://www.agriculture.gov.ie/importofanimalsandanimalproducts/briefguidetoimportinganimalproducts/>

Forestry

Forestry plants, wood and wood products. Wood packaging. Bark Free Wood and Debarked Wood. Timber and Timber Products.

See more:

- <https://www.agriculture.gov.ie/forests/service/brexit/>

Live Animals

All live animals (such as Bovine, Ovine, Caprine, Porcine, Equine, Poultry and Pets) are subject to sanitary (veterinary) checks in accordance with the relevant regulations.

See more:

- <https://www.agriculture.gov.ie/importofanimalsandanimalproducts/liveanimalimports/>

Food of Non-Animal Origin - Pesticide Residues

Certain commodities listed in Commission Implementing Regulation (EU) 2019/1793 (temporary increase of official controls) are subject to increased pesticide residue controls.

See more:

- <https://www.pcs.agriculture.gov.ie/media/pesticides/content/foodsafety/20200527InfonotetoFVimportersreimportcontrolsver23280520.pdf>
- <http://www.pcs.agriculture.gov.ie/plantprotectionproducts/brexitinformation/>

Plant and Horticulture

Plants (such as trees, flowers or vegetables) and plant products (such as fruit, foliage or timber) are subject to phytosanitary checks in accordance with the relevant regulations. Phytosanitary checks deal with plant health controls.

See more:

- <https://www.agriculture.gov.ie/farmingsectors/planthealthtrade/registrationproceduresforimport/>

Back

Next

What are the veterinary controls?

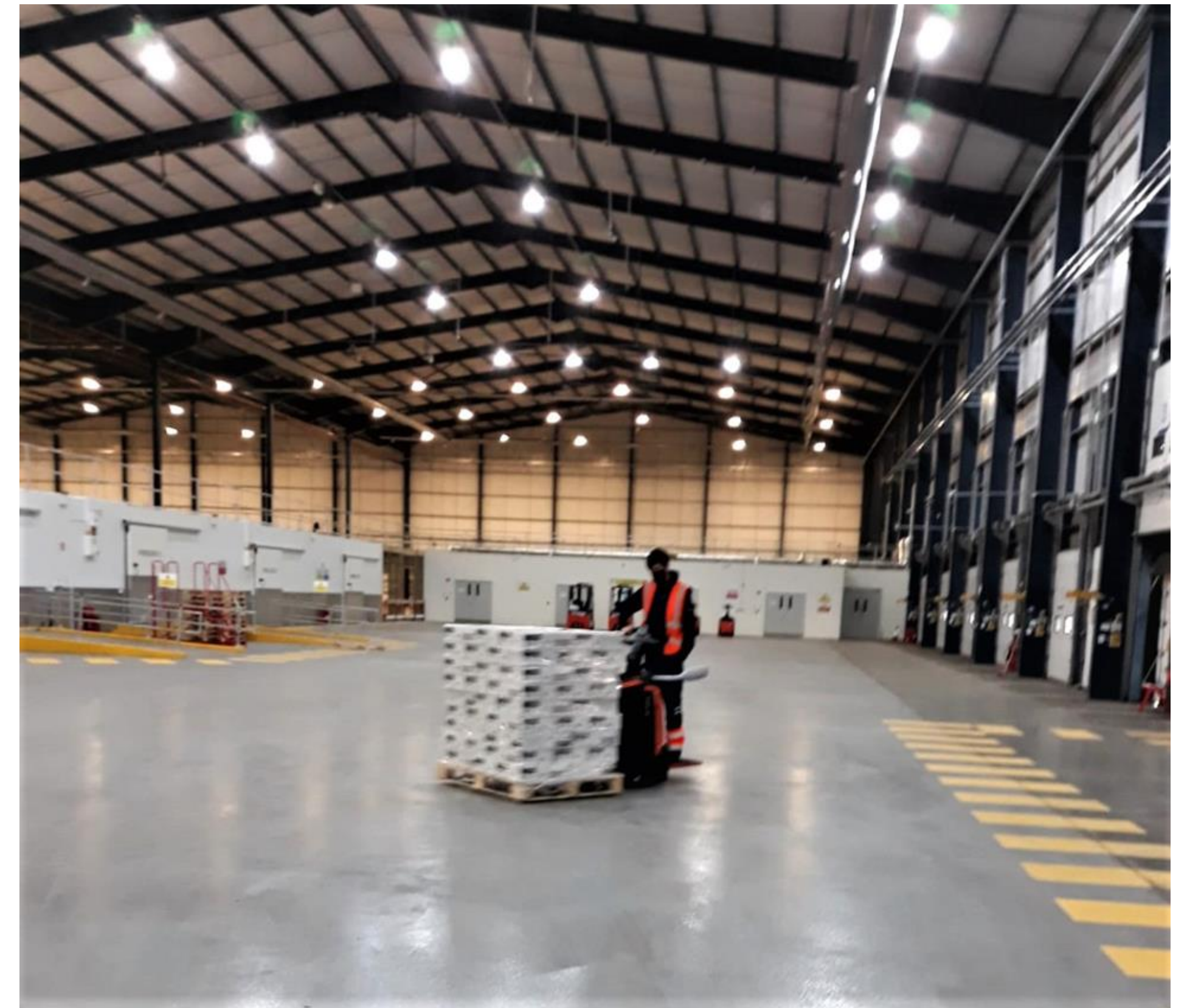


- All consignments undergo documentary and identity checks
- Health certificate, CHED-P and supporting documents checked
- Seal check in T7
- Full identity check in T10
- Physical checks rate
 - Animal byproducts (ABP) and derived products, for feeding of farmed animals: 5% of consignments
 - Other ABP: 5-15% of consignments

Seal check in T7 of Dublin Port



Full identity check in T10 area



Five steps to complete for import controls



1. Register as an operator responsible for a consignment (RFC)
2. Veterinary health certificate
3. Create a CHED-P on TRACES NT
4. Submit documents to Department's Imports Portal
5. Present consignment for inspection at Border Control

