



Global Metrics for Sustainable Feed

## Global Feed LCA Institute (GFLI)

IGFA Workshop - Understanding Environmental Footprinting in the Animal Feed Sector

26<sup>th</sup> January 2023

Nick Major Immediate Past Chair, GFLI Board

# Carbon-capture crops need incentives through CAP

By Gerardo Fortuna | EURACTIV.com reporting from Helsinki



Soil carbon sequestration and other measures intended to reduce net greenhouse gas emissions from farming require proper funding and a degree of flexibility, EU agriculture minister says at an informal meeting hosted by the Finnish Council presidency.

By continuing to browse the website, you are agreeing to our

# Forbes

## SMALL BUSINESS

### Why The Food Sector Must Respond To The COP26 Challenge



Jeremy Collier Forbes Councils Member  
Forbes Business Council  
COUNCIL POST | Membership (Fee-E

Mar 4, 2022, 08:30am EST

Jeremy Collier Foundation, Chief Int  
Collier Capital and Chair of the FAI



GETTY

# Investors make unprecedented commitment to net zero emissions

## Climate change: new rules for companies to help limit global deforestation

Press Releases | [PLENARY SESSION](#) | [ENV](#) | 13-09-2022 - 12:41

- An area larger than the EU was lost to deforestation from 1990 to 2020, with EU consumption representing around 10% of losses
- Parliament also wants pigmeat, sheep and goats, poultry, maize, rubber, charcoal and printed paper products covered by the new rules
- Human rights and the rights of indigenous people to be added as requirements

To fight global climate change and biodiversity loss, Parliament demands companies ensure that products sold in the EU do not come from deforested or degraded land.

Plenary today adopted its position on the Commission [proposal for a regulation on deforestation-free products](#) with 453 votes to 57 and 123 abstentions.

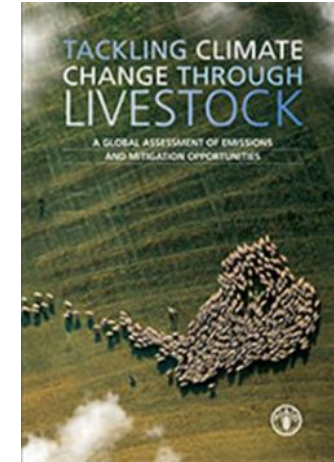
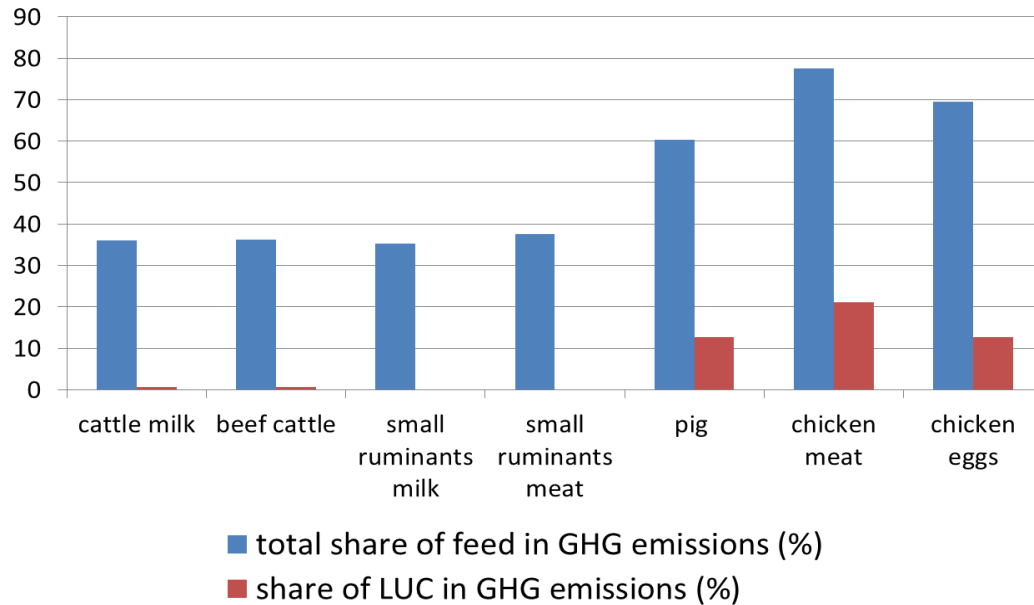
The new law would make it obligatory for companies to verify (so-called "due diligence") that goods sold in the EU have not been produced on deforested or degraded land anywhere in the world. This would guarantee consumers that the products they buy do not contribute to the destruction of forests, including of irreplaceable tropical forests, and hence reduce the EU's contribution to climate change and biodiversity loss.

### Further information

- > [Adopted text will be available here \(13.09.2022\)](#)
- > [Procedure file](#)
- > [EP research: Towards deforestation-free commodities and products in the EU \(07.09.2022\)](#)
- > [EP research: the European Union and Forests](#)
- > [EP research: P](#)

# The Feed Industry Obligation

Feed production represents 45% of the carbon footprint of livestock products globally (FAO, 2013)



# Livestock solutions for climate change



VERSION 1

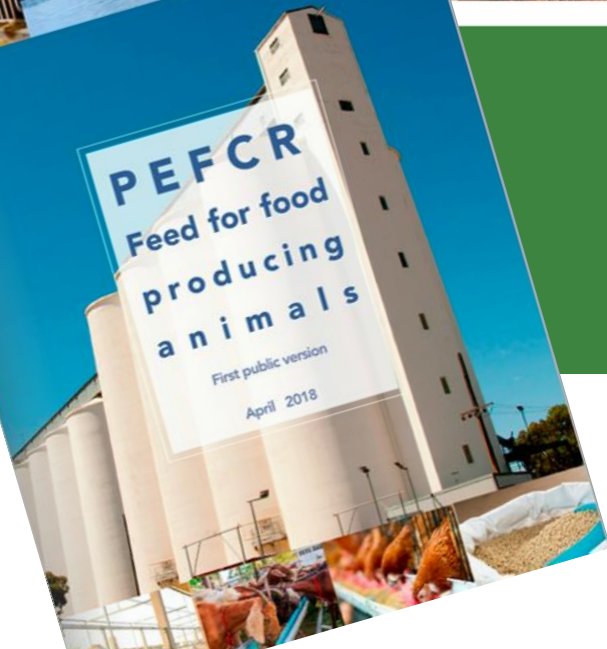
## Environmental performance of animal feeds supply chains

Guidelines for assessment

# PEFCR Feed for food producing animals

First public version

April 2018



VERSION 1

## Environmental performance of feed additives in livestock supply chains

Guidelines for assessment



**Independent animal nutrition and food industry non-profit institute** with the purpose of:

- developing a **publicly available** Animal Nutrition Life Cycle Analysis (**LCA**) **database**;
- supporting the **meaningful environmental assessment** of animal nutrition products; and
- stimulating **continuous improvement**.

*GFLI database to be recognized as **the global reference** for Feed LCA Data by the public and private sectors.*

# GFLI Mission & Vision

Database allows feed, livestock and aquaculture sectors to:

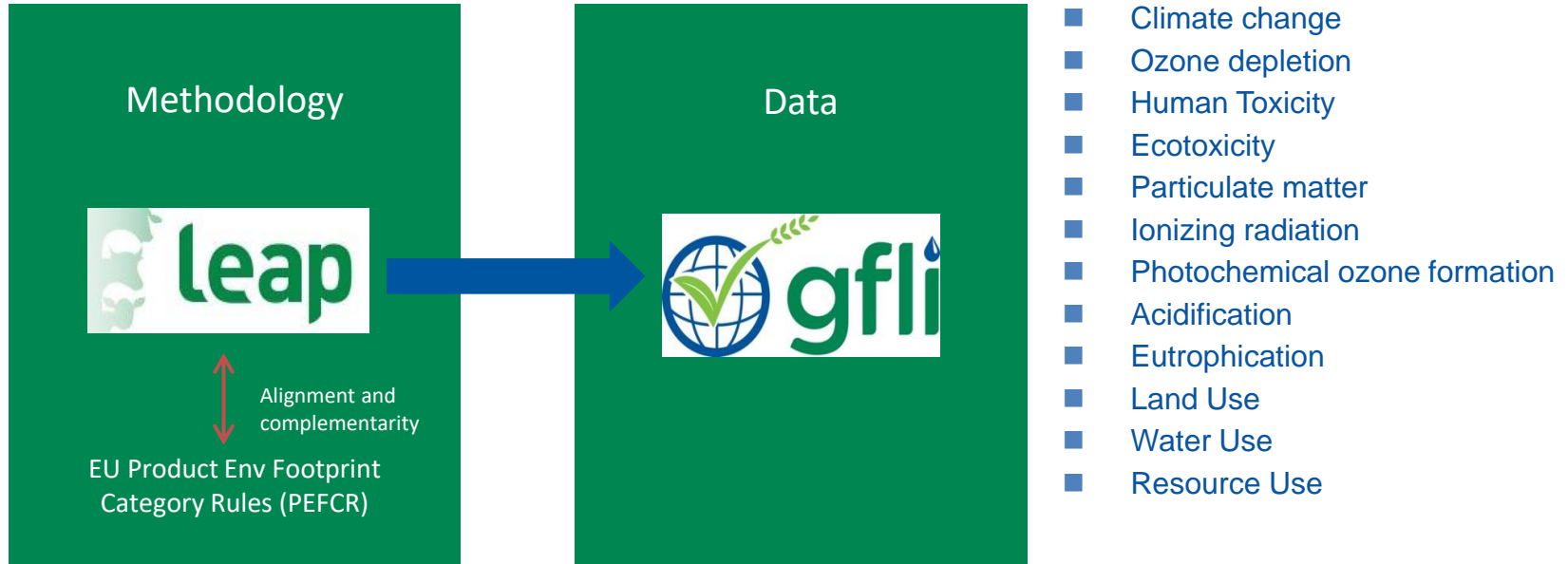
- use data based on a **harmonized methodology**;
- calculate the environmental footprint of animal nutrition products in a **transparent and trustworthy** manner; and
- benchmark and make **meaningful comparisons**.

Makes it possible to:

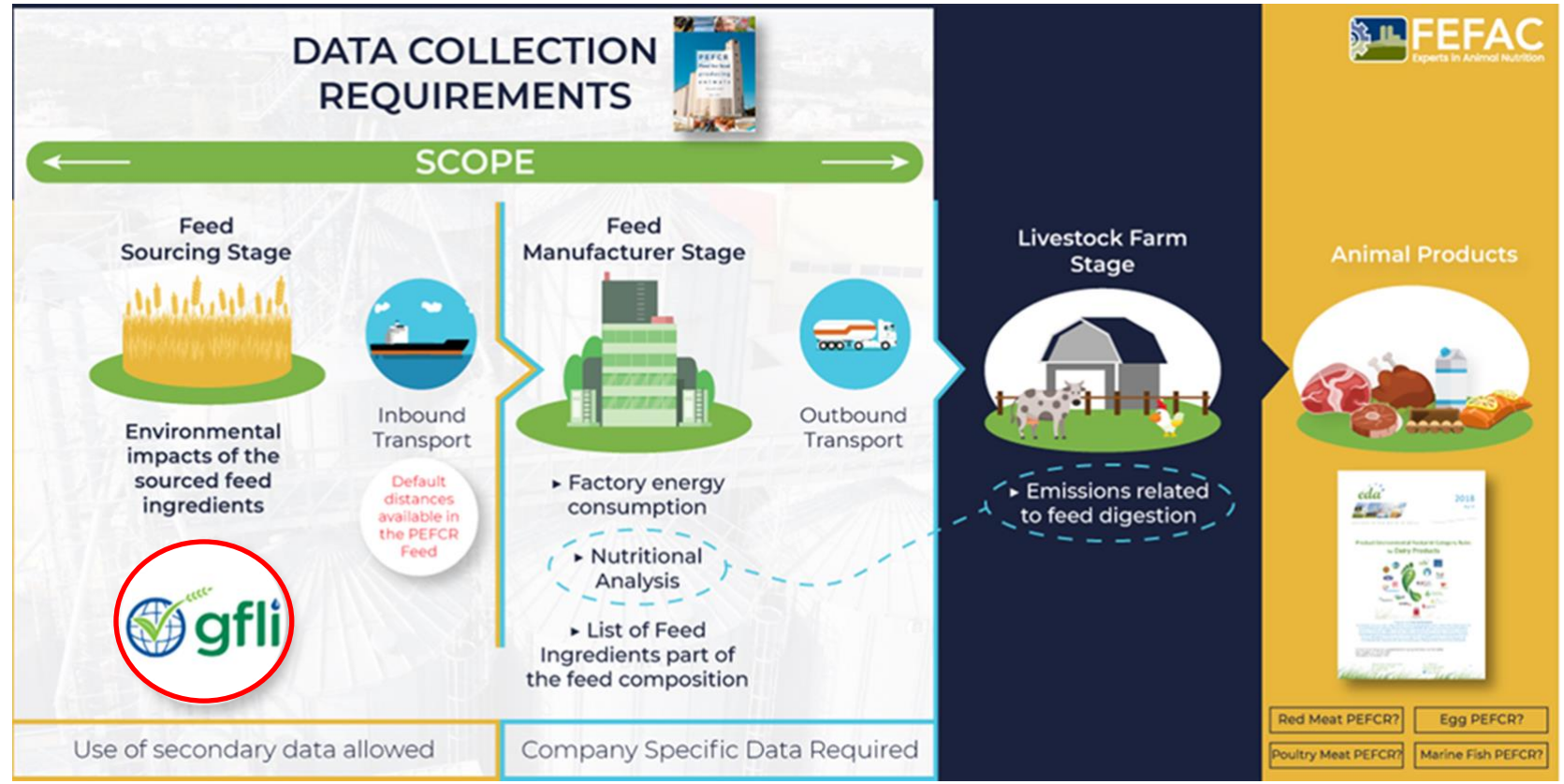
- produce feed with a lower footprint/tonne → food products with a **lower footprint/kg (meat/farmed fish/milk/cheese/egg)**.



# Data Generation Methodology



Alignment with the FAO-Livestock Environmental Assessment and Performance (LEAP) guidelines for feed and feed additives ensures the integrity & quality of LCA feed datasets.





# How to Use the Data

GFLI's aggregated data is freely available for in-house/personal use, including:

- **Benchmarking, hotspot analysis, scenario analysis**
- To **drive innovation** for more sustainable feed and animal protein
  - Reduce business risk, differentiate & increase sales of more sustainable products
  - Improve internal processes of a company
- Meet **Scope 3 emissions targets**
  - 50-80% of animal protein impact is from feed → raw materials have the biggest impact in feed
- **Marketing and communication** of results of own company based on data calculated using a **transparent and harmonized methodology**
  - Verification (Green Claims)
- Academic and other **research** and studies

Incorporating GFLI data into a commercially sold tool is possible via an annual subscription/license agreement.

# 2023 Work Plan Priorities

GFLI continues to strive for broad support from the industry in order to create a sustainable organization that will allow worldwide acknowledgement of GFLI's **transparent and harmonized methodological approach and database.**

- Increase **membership**, establish **strategic partnerships**
- Finalize the **branded data pilot**, and approve branded data **methodology**, allowing company-specific products to be included with adherence to the GFLI standard
- Launch critical in-house **LCA technology** and fund in-house **LCA expert** to facilitate efficient response to technical questions and interest in providing and using GFLI data
- **Increase data generation** through beforementioned technology (user-friendly data generation tool), in-house LCA expertise, and strategic partnerships / joint working groups
- License the disaggregated (**unit process level**) data
- **Continuous improvement** of the Institute




- **Board of Directors**
  - Vision
  - Decision-making
- **Technical Management Committee (TMC)**
  - Safeguard the quality of the database
  - Review and validate data
  - Technical advisory role to Board
- **Scientific Advisory Council (SAC)**
  - Independent expert panel for discussions on methodological and technical aspects
  - Represents a wide range of geographical and sectoral knowledge
- **GFLI Secretariat from Agribusiness Service**
  - Executive and operational work
  - PR/Communication
  - Finance and administrative affairs

# Membership

GFLI offers membership to allow corporate and association front runners to **collaborate pre-competitively** to help maintain and **improve the GFLI database** as well as **engage with other stakeholders** in the feed and food chain.

- Be recognized as a **catalyst for continuous improvement**
- Contribute to the **resilience of the entire feed and food chain**



Support global improvement of  
sustainable feed.

Develop a freely available Feed Life Cycle Analysis  
(LCA) database and tool

# Members



# Join us!

Interested in membership, providing or accessing data, or becoming a strategic partner?

Let us help you meet your sustainability goals!

Contact the GFLI Secretariat for more information at:  
[info@globalfeedlca.org](mailto:info@globalfeedlca.org)

Delanie Kellon  
Arjen Voortman  
Laura Nobel





Global Metrics for Sustainable Feed